



**TRUCKS**

A Toyota Group Company

**MORE THAN  
A TRUCK**

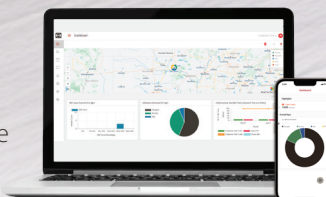
# L | SERIES

## MY27 L6/L7



## THE EVOLUTION OF **CONNECTIVITY.**

Hino Edge is a powerful, next-generation connected-vehicle solution that comes standard on all Hino trucks. It delivers vehicle location tracking, a live fleet performance dashboard, vehicle health monitoring including real-time fault notifications, streamlined service experience with case communication, and telematics.



# L | SERIES

## MY27 L6/L7



**TRUCKS**

A Toyota Group Company

ENGINE		ELECTRICAL EQUIPMENT		TANKS (GALLONS)	
Model	Cummins B6.7	Batteries	STD Two, parallel connection, 1200 CCA (GR 31) OPT Multiple battery choices 2 / 3	Fuel Tanks	STD single 50 / OPT Dual 50 / OPT Single 70 OPT Single 90
Max. output	240-260 hp @ 2,500 rpm			DEF Tanks	OPT 7.4 / OPT 15.5
Max. torque	600-660 lb.-ft. at 1,600 rpm		STD-12V, 130 A, Delco (brush)	<b>CABS</b>	
Transmission	Allison six speed automatic with NAS (neutral at stop)	Alternator	OPT 12V, 135A (brushless) / OPT 160A (brush) OPT 200A (brush)	Day Cab	Seats: 3 BBC: 108"
Front Axle	Meritor MFS series reverse Elliot, "I" beam (oil lubricated)			Extended Cab	Seats: 5 BBC: 138"
Rear Axle	Meritor, full floating, single reduction, single-speed, hypoid gearing				

### 4x2 STRAIGHT TRUCK

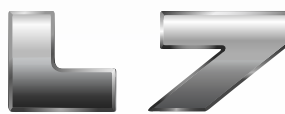
Wheelbase	in.	152	175	187	205	212	217	235	242	253	271	301
Cab to Axle (Day Cab)	in.	84.8	107.8	119.8	137.8	144.6	149.6	167.8		185.6	203.6	233.6
Cab to Axle (Extended Cab)	in.								144.6	155.6		203.6



**WEIGHT CAPACITIES:**  
Front axle range: 8,000-12,000 lbs  
Rear axle range: 17,500-19,000 lbs

### GVWR: 23,000-25,950 LBS

Engine HP	STD B6.7 240 hp / OPT B6.7L 260 hp
Transmission	STD 2200HS / STD 2200RDS / OPT 2500HS / OPT 2500RDS
Brakes	STD Hydraulic disc / STD Air S-Cam drum / STD Air Disc*
Front axle/susp.	STD 8,000 lbs / OPT 10,000/12,000 lbs
Rear susp. type	STD Spring multi leaf / OPT Hendrickson COMFORT AIR -w/electric pump valves
Rear axle/susp.	STD 17,500/ 19,000 lbs / OPT 19,000/ 19,000 lbs
Wheel size	STD 19.5" (25.5k GVWR) / OPT 22.5" (23k GVWR & 26k GVWR)
Wheel type	STD Powder coated white / OPT Alcoa
Frame yield strength	STD 80K PSI(1.0 M RBM)



**WEIGHT CAPACITIES:**  
Front axle range: 12,000-14,600 lbs  
Rear axle range: 21,000-46,000 lbs

### GVWR: 33,000 LBS

Engine HP	STD B6.7 260 hp
Transmission	STD 2500RDS / OPT 2500HS / OPT 3000RDS / OPT 3000HS
Brakes	STD Air S-cam drum OPT Air disc++
Front axle/susp.	STD 12,000 / OPT 10,000 / OPT 13,200 / OPT 14,000
Rear susp. type	STD 21,000 / OPT 23,000
Rear axle/susp.	STD Multi leaf spring (23k lbs) / OPT Multi leaf spring (31k lbs) / OPT Hendrickson 23K Comfort Air / OPT Hendrickson 23K Severe Duty Air -w/ electric dump valves
Rear axle ratio	STD 5.57 (33k GVWR)
Wheel type	STD Powder coated white / OPT Alcoa
Frame yield strength	STD 120K PSI(1.9 M RBM)

### POPULAR OPTIONAL EQUIPMENT

Allison FuelSense 2.0 + NAS w/ Dynactive and Acceleration Rate Management
Anti-siphon device insert in fuel tank
Back-up alarm
Engine idle shutdown
Exhaust system - vertical stack type
Mirrors, single arm fender mounted, outside rearview, power heated - chrome or black
Power windows and door locks (with or without keyless entry)
Programmable speed limit 65/70/75 mph
Stabilizer bar, rear (leaf suspension only)
Trailer brake package
Rear disconnect & jump studs
Battery disconnect & jump stud
Rear axle ratio • L6 - 5.13, 5.29, 4.33, 4.63, 4.88" • L7 - 4.88, 5.29, 5.86, 6.14"
Full LED Headlights including high/low beams, daytime running and indicator lights
Hino Safety Suite

Hino's optional Safety Suite includes a Collision Mitigation System with Adaptive Cruise Control, and Lane Departure Warning in addition to an Antilock Brake System and Electronic Stability Control.

### SERVICES



CUMMINS	Engine	STD 3 Year Unlimited
HINO EDGE	Telematics	STD 5 Year
HINOWATCH	24/7 Roadside Assistance	STD 3 Year
ALLISON 5 YEAR WARRANTY	Transmission	STD 5 Year

Not all equipment combinations are compatible. For compatibility, additional options and specifications please visit your local Authorized Hino Trucks Dealer. Are you a body company? Additional information @ hinobodybuilder.com

Legal Disclaimer - The equipment and specifications shown are subject to change without notice. The information, content, and materials are presented "as is" at the time of publication, and no representations are made that the content is error-free. ©Hino Motors Sales U.S.A., Inc. All rights reserved. All other marks are trademarks of their respective owners.

HSMY27LSPEC1125

