



TRUCKS

A Toyota Group Company

XL | SERIES

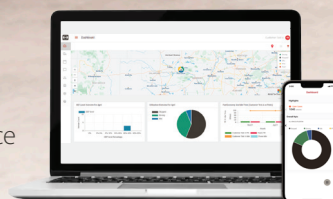
MY27 XL7/XL8

**MORE THAN
A TRUCK**



THE EVOLUTION OF **CONNECTIVITY.**

Hino Edge is a powerful, next-generation connected-vehicle solution that comes standard on all Hino trucks. It delivers vehicle location tracking, a live fleet performance dashboard, vehicle health monitoring including real-time fault notifications, streamlined service experience with case communication, and telematics.



XL | SERIES

MY27 XL7/XL8



ENGINE		ELECTRICAL EQUIPMENT		TANKS (GALLONS)	
Model	Cummins L9	Batteries	STD Two, parallel connection, 1200 CCA (GR 31) OPT battery choices 2 / 3 / 4	Fuel Tanks	STD single 50 / OPT single 90
Max. output	300-360 hp @ 2,200 rpm			DEF Tanks	STD 7.4 / OPT 15.5 (w/ 4 Battery Option ONLY)
Max. torque	860-1,150 lb-ft @ 1,200 rpm	Alternator	STD-12V, 130 A, Delco (brush type) OPT 12V, 135A (brushless) / OPT 180A (brush) OPT 200A (brush)	CABS	
Transmission	Allison six speed automatic with NAS (neutral at stop)			Day Cab	Seats: 3 BBC: 109.6"
Front & Rear Axles	Dana Spicer			Extended Cab	Seats: 5 BBC: 139.6"

4x2 STRAIGHT TRUCK																
Wheelbase	in	152	175	181	187	196	205	212	217	235	253	271	280	289	298	304
Cab to Axle (Day Cab)	in	84.8	107.8	113.8	119.8	128.8	137.8	144.8	149.8	167.8	185.8	203.8	212.8	221.8	230.8	236.8
Cab to Axle (Extended Cab)	in								119.8	137.8	155.8					206.8





4x2 TRACTOR			
Wheelbase	in	152	162
Cab to Axle (Day Cab)	in	84.8	97.8

6x2 STRAIGHT TRUCK									
Wheelbase	in	182	194	214	233	261	265	275	281
Cab to Axle (Day Cab)	in	114.8	126.8	146.8	165.8	193.8	197.8	207.8	213.8
Cab to Axle (Extended Cab)	in						167.8		



WEIGHT CAPACITIES:
Front axle range: 12,000-13,200 lbs
Rear axle range: 21,000-23,000 lbs

GVWR: 33,000 LBS		GVWR: 34,200-60,600 LBS	
Engine HP	STD L9 300 hp / OPT L9 330 hp / OPT L9 360 hp	Engine HP	STD L9 300 hp / OPT L9 330 hp / OPT L9 360 hp
Transmission	STD 3000 RDS / OPT 3000 HS / OPT 3500 RDS	Transmission	STD 3000 RDS / OPT 3000 HS / OPT 3500 RDS
Brakes	STD Air S-cam drum	Brakes	STD Air S-cam drum / STD Air Disc (4x2 tractor only)
Front axle/susp.	STD 12,000 lbs / OPT 13,200 lbs	Front axle/susp.	STD 12,000 lbs / OPT 13,200 lbs / OPT 14,000 lbs / OPT 14,600 lbs
Rear susp. type	STD Spring multi leaf / OPT Shock absorber / OPT Sub leaf helper spring / OPT Rubber helper spring / OPT 21K Hendrickson air susp. / OPT 23K Hendrickson air susp.	Rear susp. type	STD Spring multi leaf / OPT Shock absorber / OPT Sub leaf helper spring / OPT Rubber helper spring / OPT 21K Hendrickson air susp. / OPT Hendrickson COMFORT AIR
Rear axle/susp.	STD 21,000 lbs / OPT 23,000 lbs	Rear axle/susp.	STD 21,000 lbs / OPT 46,000 lbs
Wheel type (22.5")	STD Powder coated white / OPT Alcoa	Wheel type	STD Powder coated white / OPT Alcoa
Frame yield strength	STD 120K PSI (1.9 M RBM) / OPT 120K PSI (2.6 M RBM) / OPT Double frame 120K PSI (3.8 M RBM)	Frame yield strength	STD 120K PSI (1.9 M RBM) / STD 120K PSI (2.1 M RBM) / OPT 120K PSI (2.6 M RBM) / OPT Double frame 120K PSI (3.8 M RBM)

POPULAR OPTIONAL EQUIPMENT			SERVICES		
Allison FuelSense 2.0 + NAS w/ Dynactive and Acceleration Rate Management			   		
Differential lock and controls			CUMMINS	Engine	STD 2 Year or 250,000 miles
Engine idle shutdown 3, 5, or 10 minutes			HINO EDGE	Telematics	STD 5 Year
Back-up alarm			HINOWATCH	24/7 Roadside Assistance	STD 3 Year
Exhaust system - vertical stack type			ALLISON 5 YEAR WARRANTY	Transmission	STD 5 Year
Jacobs engine brake			Not all equipment combinations are compatible. For compatibility, additional options and specifications please visit your local Authorized Hino Trucks Dealer. Are you a body company? Additional information @ hinobodybuilder.com		
Mirrors, single arm fender mounted, outside rearview, power heated - chrome or black					
Convex Passenger side look down mirror					
Power windows and door locks (with or without keyless entry)					
Programmable speed limit 65/70/75 mph					
Trailer brake package					
Rear of cab work light					
SAF Holland FW17 or FW35 fifth wheel (stationary)					
Battery disconnect & jump stud					
Hino Safety Suite					
Hino's optional Safety Suite includes a Collision Mitigation System with Adaptive Cruise Control, and Lane Departure Warning in addition to an Antilock Brake System and Electronic Stability Control.					

Legal Disclaimer - The equipment and specifications shown are subject to change without notice. The information, content, and materials are presented "as is" at the time of publication, and no representations are made that the content is error-free. ©Hino Motors Sales U.S.A., Inc. All rights reserved. All other marks are trademarks of their respective owners.

HSMY27XLSPEC1125

